



Performance Report for: <http://mbi-network.com/>

Report generated: Fri, Mar 17, 2023 6:54 PM +0100
 Test Server Location: London, UK
 Using: Chrome (Desktop) 103.0.5060.134, Lighthouse 9.6.4

A	Performance	Structure	L. Contentful Paint	T. Blocking Time	C. Layout Shift
	99%	99%	788ms	0ms	0.01

Top Issues

IMPACT	AUDIT	
Low	Avoid an excessive DOM size <small>TBT</small>	1,061 elements
Low	Eliminate render-blocking resources <small>FCP LCP</small>	Potential savings of 14ms
Low	Avoid enormous network payloads <small>LCP</small>	Total size was 929KB
Low	Properly size images	Potential savings of 71.2KB
Low	Serve static assets with an efficient cache policy	Potential savings of 5.72KB

Page Details



Total Page Size - 929KB



Total Page Requests - 49



HTML JS CSS IMG Video Font Other

How does this affect me?

Today's web user expects a fast and seamless website experience. Delivering that fast experience can result in increased visits, conversions and overall happiness.

As if you didn't need more incentive, **Google has announced that they are using page speed in their ranking algorithm.**

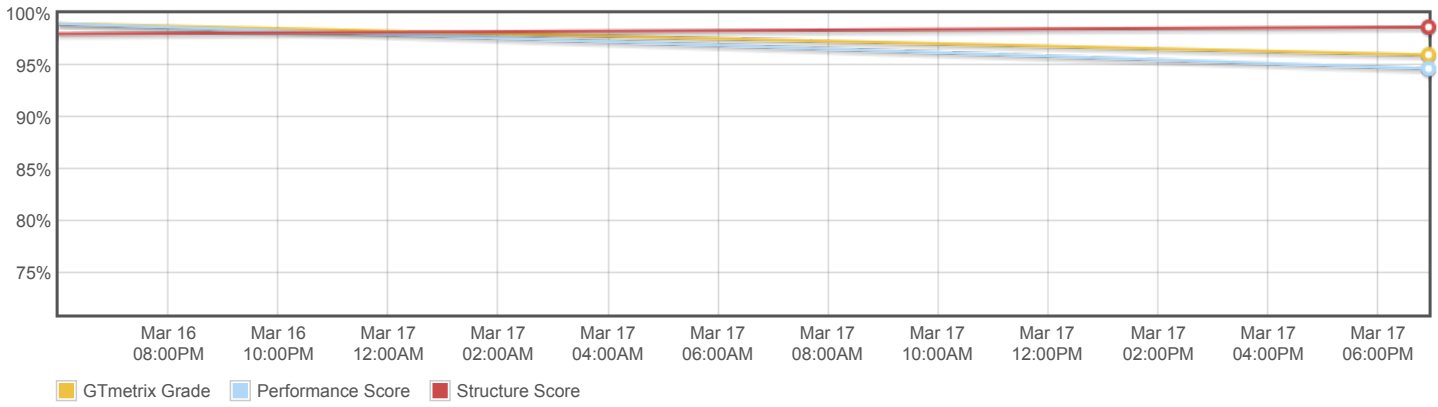
About GTmetrix

CARBON60
THE MANAGED CLOUD COMPANY

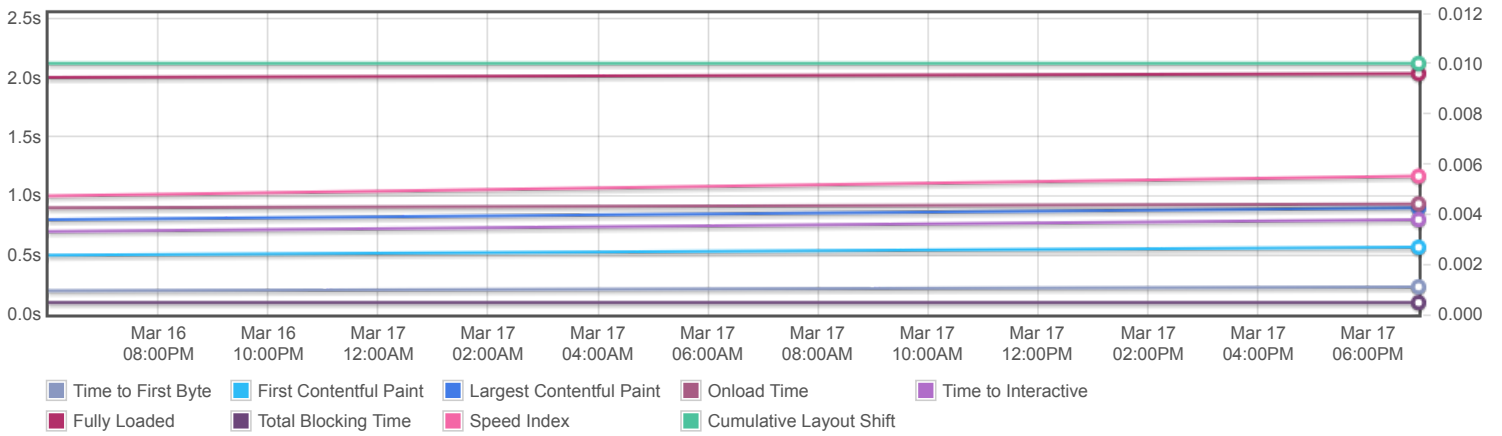
GTmetrix is developed by the good folks at Carbon60, a Canadian hosting company with over 27 years experience in web technology.

<https://carbon60.com/>

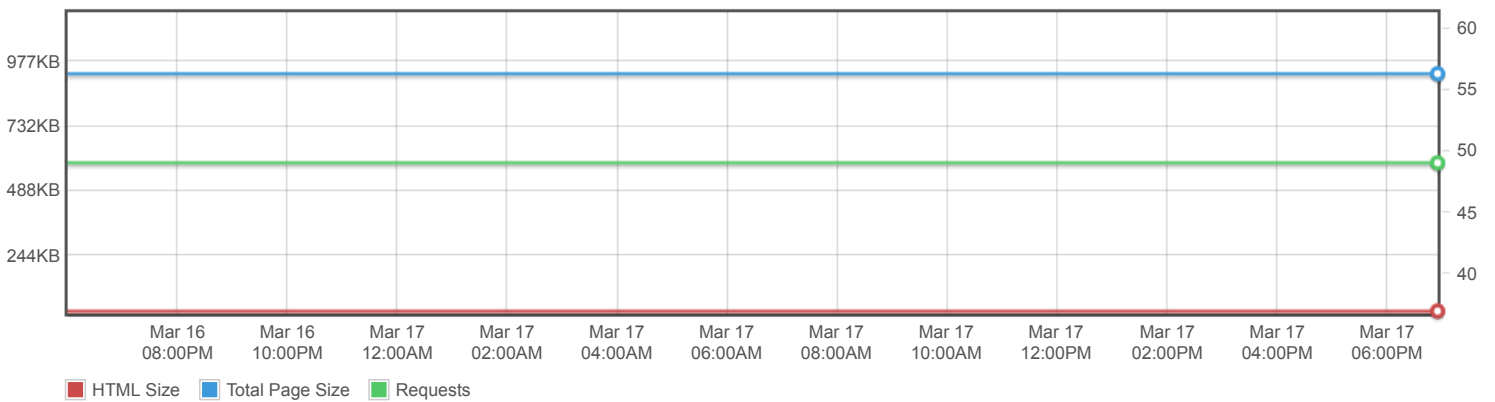
Page scores



Page metrics

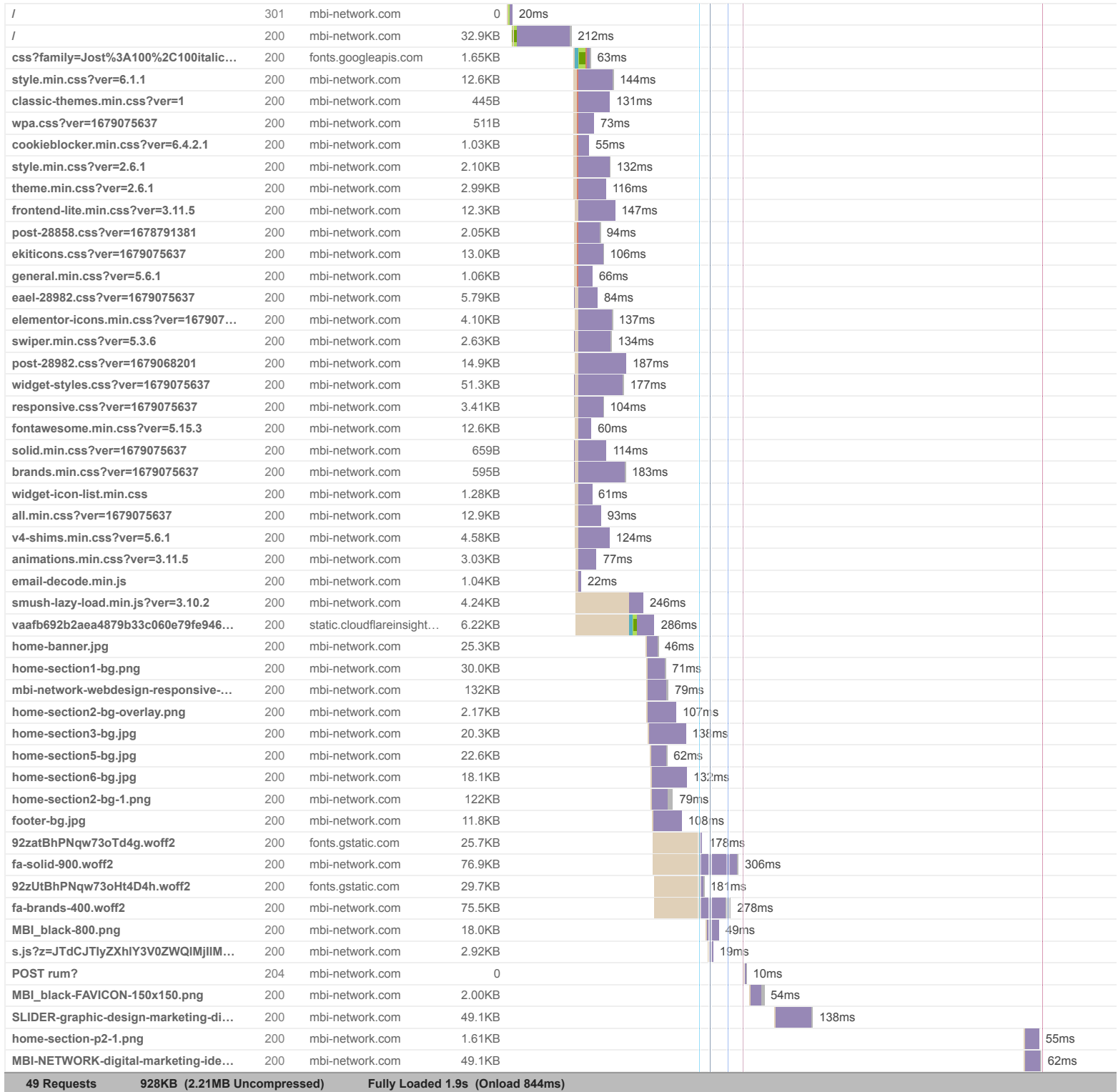


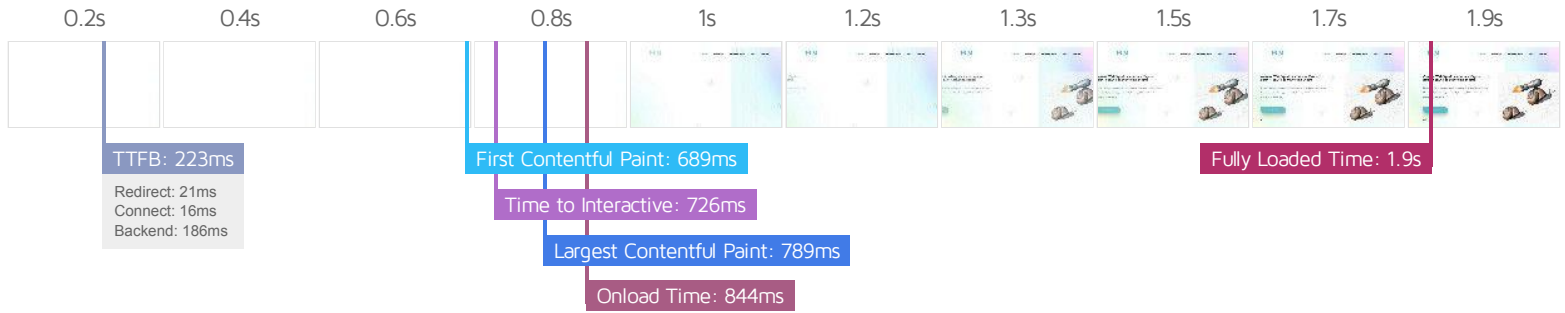
Page sizes and request counts



The waterfall chart displays the loading behaviour of your site in your selected browser. It can be used to discover simple issues such as 404's or more complex issues such as external resources blocking page rendering.

👉 Tout Savoir sur le Marketing Digital, Webdesign & SEO !!!!





Performance Metrics

<p>First Contentful Paint</p> <p>How quickly content like text or images are painted onto your page. A good user experience is 0.9s or less.</p>	<p>Good - Nothing to do here</p> <p>688ms</p>	<p>Time to Interactive</p> <p>How long it takes for your page to become fully interactive. A good user experience is 2.5s or less.</p>	<p>Good - Nothing to do here</p> <p>726ms</p>
<p>Speed Index</p> <p>How quickly the contents of your page are visibly populated. A good user experience is 1.3s or less.</p>	<p>Good - Nothing to do here</p> <p>1.0s</p>	<p>Total Blocking Time</p> <p>How much time is blocked by scripts during your page loading process. A good user experience is 150ms or less.</p>	<p>Good - Nothing to do here</p> <p>0ms</p>
<p>Largest Contentful Paint</p> <p>How long it takes for the largest element of content (e.g. a hero image) to be painted on your page. A good user experience is 1.2s or less.</p>	<p>Good - Nothing to do here</p> <p>788ms</p>	<p>Cumulative Layout Shift</p> <p>How much your page's layout shifts as it loads. A good user experience is a score of 0.1 or less.</p>	<p>Good - Nothing to do here</p> <p>0.01</p>

Browser Timings

Redirect	21ms	Connect	16ms	Backend	186ms
TTFB	223ms	First Paint	688ms	DOM Int.	690ms
DOM Loaded	726ms	Onload	844ms	Fully Loaded	1.9s

IMPACT	AUDIT	
Low	Avoid an excessive DOM size TBT	1,061 elements
Low	Eliminate render-blocking resources FCP LCP	Potential savings of 14ms
Low	Avoid enormous network payloads LCP	Total size was 929KB
Low	Properly size images	Potential savings of 71.2KB
Low	Serve static assets with an efficient cache policy	Potential savings of 5.72KB
Low	Avoid multiple page redirects FCP LCP	Potential savings of 20ms
Low	Avoid long main-thread tasks TBT	1 long task found
Low	Reduce JavaScript execution time TBT	66ms spent executing JavaScript
Low	Reduce unused CSS FCP LCP	Potential savings of 123KB
Low	Serve images in next-gen formats	Potential savings of 74.2KB
Low	Reduce initial server response time FCP LCP	Root document took 186ms
Low	Defer offscreen images	Potential savings of 173KB
Low	Avoid chaining critical requests FCP LCP	24 chains found
N/A	Largest Contentful Paint element LCP	1 element found
N/A	Avoid large layout shifts CLS	5 elements found
N/A	Minimize main-thread work TBT	Main-thread busy for 646ms
N/A	Reduce the impact of third-party code TBT	Total size was 63.9KB
N/A	User Timing marks and measures	